

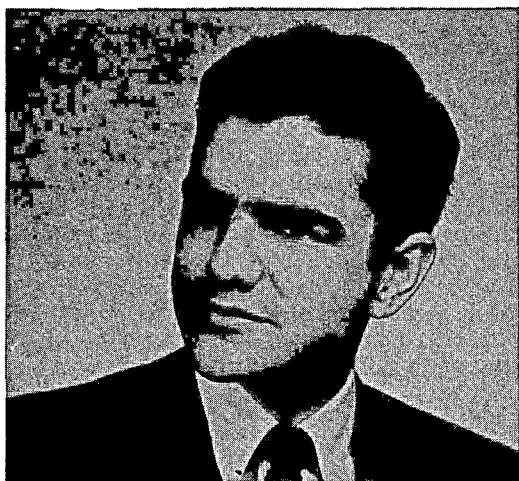
THE NUNTIUS

Official Publication of Eta Sigma Phi, Inc., National Honorary Classical Fraternity

Volume 28

November 15, 1953

Number 1



ROY EPPERSON

PRESIDENT EPPERSON ADDRESSES MEMBERSHIP IN ANNUAL MESSAGE

The following is the text of the annual letter from the National President of Eta Sigma Phi:

"Fellow Members of ETA SIGMA PHI:

"As ETA SIGMA PHI begins its thirtieth year as a National honorary, let us set our faces to the goal of making this our greatest year.

"The recommendation made at the twenty-fifth National Convention, held at Agnes Scott College last April, that ETA SIGMA PHI Medals be made available for two and three year Latin students is now under consideration. These medals are necessary due to the fact that few schools now offer four years of Latin. The casting of these medals will be a definite step of progress. Your National officers welcome any suggestions on this recommendation.

"We must continue to promote all phases of the Classical Studies; to keep alive the appreciation of Greek and Roman Culture; and above all to expand the bonds of our friendship to others.

"The twenty-sixth National Convention, to be held in St. Louis, Missouri, April 22-24, will be a memorable one, for we will be meeting in conjunction with the Classical Association of the Middle West and South, which will be celebrating its Golden Anniversary. I urge each of you to make a special effort to see that your chapter is represented there.

"Fraternally,
Roy Epperson"

ETA SIGMA PHI CONTESTS FOR 1954

For 1953-1954, Eta Sigma Phi, national undergraduate honorary classical fraternity, announces the following four Contests. Further information may be had from the Chairman of Contests, W. C. Korfmacher, Saint Louis University, 3650 Lindell Boulevard, Saint Louis 8, Missouri.

1) Ninth Annual Essay Contest:

(a) Subject: "Solon, Father of Western Democracy".

(b) Eligibility: The Contest is open to college undergraduates, enrolled at the time of submission of the paper in a course of Greek or Latin in an approved college or university in the United States or Canada.

(c) Identification: Each paper submitted is to be accompanied by an identification page, available in advance from the Chairman of Contests, giving necessary information and including a testimonial from a member of the classics faculty at the contestant's school as to the contestant's right to participate and his fair and original preparation of the paper. There is a limit of five papers from any one school.

(d) Qualifications: All papers must be original. Sincerity and definiteness will be especially considered. Quotations must be duly credited. Format, mode of citation, and the like, must be uniform within the paper. Entries must be typewritten, in double space, on one side only of normal-sized typewriter paper. The maximum length is 2,250 words.

(e) Dates: Written notice of a desire to participate, postmarked not later than February 1, 1954, must be sent to the Chairman of Contests. Entries themselves, similarly sent, must be postmarked not later than February 15, 1954.

(f) Decision: Decision as to place will be made by an expert judge or board of judges, who will identify the papers by code designation only.

(g) Prizes: First, \$50.00; second, \$35.00; third, \$25.00; fourth, \$17.50; fifth, \$12.50; sixth, \$10.00. For its full award, the contest will require a minimum of fifteen entries, from fifteen different schools.

2) Fifth Annual Greek Translation Contest:

(a) Content: The Contest will consist in the sight translation of a passage in Greek chosen with an eye to students in the second year of the language or above. Translations will be written in a two-hour period, under normal examination regulations, in each contestant's own school.

(Cont'd. page 3, col. 1)

TWO NEW CHAPTERS INSTALLEDGAMMA ETA

Gamma Eta Chapter was installed at Louisiana College, Pineville, Louisiana, on May 9, 1954. The installation ceremonies were administered by a group of six from the Alpha Chi Chapter, Tulane University and Newcomb College, consisting of G. W. Regenos, Executive Secretary, Dr. J. B. McMinn, formerly a member of the faculty at Louisiana College, John B. Austin, National Treasurer, and Eugene Garber, of Tulane, and Professor Mary Tenney and Sterling Peebles, of Newcomb College. Professor George W. Currie, head of the Classics Department at Louisiana College and for many years a member of Eta Sigma Phi, assisted. Nine students were initiated into active membership in the new chapter.

Following the installation exercises the guests and initiates were graciously entertained by Professor and Mrs. Currie at an informal gathering in the Domestic Science Rooms of the college. The visiting group also had the pleasure of stopping in at Professor Currie's home before starting back to New Orleans to see some of his exquisitely done marble carvings. Professor Currie is a man of many talents and hobbies, of which sculpture is one.

Professor Currie was formerly editor of The Nuntius while a member of the faculty at Birmingham-Southern College. The national organization is fortunate in having Professor Currie once more closely associated with its activities in his capacity of faculty adviser of this new chapter. His group of students too has shown much interest in the newly created chapter.

The officers of Gamma Eta are: President, Kenneth F. Wall; First Vice-President, Albert Miller; Second Vice-President, Robert K. Chadbourne; Treasurer and Faculty Adviser, G. W. Currie; Secretary, Bobby W. Stagg; Sergeant-at-arms, James White.

GAMMA THETA

Gamma Theta Chapter was installed at Georgetown College, Georgetown, Kentucky, on May 14, 1953. A group from Tau Chapter, University of Kentucky, officiated at the installation and the initiation of eight charter members of the new chapter. Refreshments were served.

Mrs. Grace H. Beardsley, a graduate of Vassar College, with the degrees of Master of Arts and Doctor of Philosophy from Johns Hopkins University, is head of the Department of Ancient Languages at Georgetown. She has been most effective in her efforts to build up her classes in Greek, Latin, and Ancient History. Again, increased strength is given to the national organization by the addition of this new chapter.

The newly installed officers of Gamma Theta are: President, Jim Peyton; Vice-President, Rebecca Morrow; Secretary, Mary Ruth Beckett; Corresponding Secretary, Dolores Williams; Treasurer, Henry Johns; Sergeant-at-arms, Louis Holtzclaw; Faculty Adviser, Grace H. Beardsley.

NATIONAL PRESIDENT PLANS
TEACHING CAREER IN COLLEGE

Roy Epperson, National President of Eta Sigma Phi, whose photograph and letter to the membership appear on the front page of this issue, is now a senior at Millsaps College, Jackson, Mississippi. He is majoring in Chemistry, with Latin as a minor.

Roy was born October 14, 1932, at Burnsville, Mississippi. After graduation from the high school at Louisville, Mississippi, he entered Millsaps College in the Fall of 1950. While at Millsaps he has won recognition in leadership and scholarship by election to Omicron Delta Kappa, men's leadership honorary, Theta Nu Sigma, a Science honorary, Eta Sigma Phi, and Norsemen, men's independent association. He has been a student assistant in Chemistry and in Latin, each for a period of two years. He has served as circulation manager of Purple and White, the college newspaper, and as business manager of Stylus, the literary publication.

He will be included in the 1953-54 edition of WHO'S WHO AMONG STUDENTS IN AMERICAN UNIVERSITIES AND COLLEGES.

Among his hobbies are floriculture, cake decorating, and classical music of all kinds. During the past summer he served on a Methodist Youth Caravan in West Virginia. This is a plan, he explains, whereby young people may give a summer of their time to work in the local churches of the various conferences.

After graduation from Millsaps Roy hopes to enter the University of North Carolina and to work toward a Doctor of Philosophy degree in Chemistry. After the completion of his graduate studies he plans to teach Chemistry in a college or university.

The Sixth Annual Latin Institute of the American Classical League was held at Miami University, Oxford, Ohio, June 18-20, 1953. The theme of the meeting was: Service Beyond the Call of Duty. The Chairman of the Program Committee was Professor Dorrance S. White, of the University of Iowa. Professor Henry C. Montgomery, of Miami University, was Chairman of the local committee.

Professor Van L. Johnson, of Tufts College, was elected president of the American Classical League. He succeeds Professor Walter R. Agard, of the University of Wisconsin. Professor Lillian B. Lawler, of Hunter College, continues as Editor of the Classical Outlook.

The Classics Department at Randolph-Macon Woman's College presented in the original Greek the Eumenides of Aeschylus on May 16, 1953. The play was directed by Professor Mabel K. Whiteside, who for many years has had her Greek students present a Greek play annually.

A copy of our Eta Sigma Phi song is being sent to each chapter along with this issue of The Nuntius. Additional copies may be secured on request from the national office without charge.



ANN E. PERKINSON

NATIONAL VICE-PRESIDENT PREPARING
TO TEACH LATIN AND OTHER SUBJECTS

National Vice-President Ann E. Perkinson, a senior at Mary Washington College of the University of Virginia, is majoring in Latin, and will also have enough hours in English and History to teach them in the secondary schools of Virginia. After graduation Ann plans to teach in high school two or three years, and then perhaps do graduate work.

Ann was born in Crewe, Virginia, May 18, 1933, the daughter of Mr. and Mrs. William Warren Perkinson. Her elementary and secondary school education was received in the Crewe schools. Besides her years at Mary Washington College she spent one summer session at Longwood College.

Ann has been very active in the work of the Beta Nu Chapter of Eta Sigma Phi. She has served as secretary-treasurer of the chapter, and this year she is president. She is also a member of Gamma Chapter of Alpha Phi Sigma.

As national vice-president of Eta Sigma Phi, Ann is Chairman of the Committee on Reactivation and Expansion. She solicits the active support and cooperation of all the chapters in attempting to secure more chapters among the better institutions. We know that she will be pleased to receive the names of faculty members or students who think they might wish to apply for a charter.

CONTESTS (Cont'd. from page 1)

(b) Eligibility: The Contest is open to college undergraduates, enrolled at the time of participation in a course in Greek language in an approved college or university in the United States or Canada.

(c) Identification: Each paper submitted is to be accompanied by an identification page, as in the Essay Contest. There is a limit of five papers from any one school.

(d) Dates: Written notice of a desire to participate, postmarked not later than February 1, 1954, must be sent to the Chairman of Contests. The Contest will be administered simultaneously in all the participating schools on February 8, 1954. Entries themselves, addressed to the Chairman of Contests, must be postmarked not

later than February 15, 1954.

(e) Decision: Decision as to place will be made by an expert judge, who will identify the papers by code designation only.

(f) Prizes: Six prizes will be offered, as in the Essay Contest, except that any participant placing in both events will receive an added award equal to that which he wins in the Greek Translation Contest. For its full award, the Contest will require a minimum of fifteen entries, from fifteen different schools.

3) Fourth Annual Satterfield Latin Translation Contest:

(a) Content: The Contest will consist in the original translation of a passage in Latin to be supplied on request by the Chairman of Contests. Translations will be written as normal, "out-of-class" work, not as examinations.

(b) Eligibility: The Contest is open to college undergraduates, enrolled at the time of participation in an approved college or university in the United States or Canada.

(c) Identification: Each paper submitted is to be accompanied by an identification page, as in the Essay Contest. There is a limit of five papers from any one school.

(d) Dates: Written notice of a desire to participate, postmarked not later than February 1, 1954, must be sent to the Chairman of Contests. Entries themselves, similarly sent, must be postmarked not later than February 15, 1954.

(e) Decision: Decision as to place will be made by an expert judge, who will identify the papers by code designation only.

(f) Prize: A prize of \$25.00 will be given for the best paper.

4) Third Chapter Foreign Language Census:

(a) Content: The Content will consist in a report of foreign language credits held by college undergraduates, and these credits will be totalled (with weightings in favor of Greek, Latin, Sanskrit, and Hebrew) according to a system to be sent, on request, by the Chairman of Contests.

(b) Eligibility: The Contest is among chapters of Eta Sigma Phi Fraternity, and hence reports will be accepted only from college undergraduates who are chapter members and attending the college or university to which the chapter belongs.

(c) Identification: Each report submitted must be signed by the faculty sponsor of the chapter to which the entrant belongs. A chapter may send as many entries as it wishes, but only one award will be given to any one chapter.

(d) Dates: Written notice of a desire to participate, postmarked not later than February 1, 1954, must be sent to the Chairman of Contests. Entries themselves, similarly sent, must be postmarked not later than February 15, 1954.

(e) Decision: As decision on place is a matter merely of mathematical calculation, it will be handled in the office of the Chairman of Contests.

(f) Prizes: For the chapter reporting a student with the highest number of points, \$25.00; second, \$15.00; third, \$10.00.

THE NUNTIUS

Vol. 28 November 15, 1953 No. 1

Published four times during the academic year: November 15, January 15, March 15, and May 15. Sent without charge to all active members of Eta Sigma Phi, for each year in which dues are paid. Price to others: \$1.00 per year. All communications regarding publication or business should be addressed to *The Editor*: Graydon W. Regenos, Tulane University, New Orleans 18, Louisiana.

Official Publication of Eta Sigma Phi, National Honorary Classical Fraternity, Founded in 1914, Nationalized in 1924, Incorporated under the Laws of the State of Illinois, June 20, 1927.

OFFICERS

Roy Epperson -- Millsaps College,
Jackson, Mississippi *National President*

Ann E. Perkinson -- Mary Washington College
Fredericksburg, Virginia *National Vice-President*

Jo Ann Sweeney -- Wisconsin State College,
Milwaukee, Wisconsin *National Secretary*

John B. Austin -- Tulane University,
New Orleans, Louisiana *National Treasurer*

BOARD OF TRUSTEES

Professor Victor D. Hill (1955), Ohio University, Athens, Ohio, *Chairman*
Professor Grace L. Beede (1956)
University of South Dakota, Vermillion, South Dakota
Professor Lillian B. Lawler (1955),
Hunter College, New York 21, New York
Professor H. Lloyd Stow (1954),
Vanderbilt University, Nashville, Tennessee
Professor William H. Willis (1956),
University of Mississippi, University, Mississippi

HONORARY PRESIDENT

Professor Gertrude Smith
University of Chicago, Chicago 37, Illinois

HONORARY EXECUTIVE SECRETARY

Professor William C. Korfmacher
Saint Louis University, Saint Louis 8, Missouri

EXECUTIVE SECRETARY

Professor Graydon W. Regenos,
Tulane University, New Orleans 18, Louisiana

ALPHA TAU CHAPTER, UNIVERSITY OF OHIO, SPONSORS HIGHLY SUCCESSFUL LECTURE SERIES

Professor J. B. Titchener, Chairman of the Department of Classical Languages at Ohio State University has submitted to the Editor a detailed account of a highly successful series of lectures sponsored by the local chapter of Eta Sigma Phi and with the support of the Graduate School of the University. Although the report is quite long, we print it in its entirety, for we believe that other chapters will find in it helpful suggestions for similar programs. The report follows:

This has been a rather spectacular year for our Eta Sigma Phi chapter at The Ohio State University and it is possible that our experience might suggest something similar to others. Our own program originated by purest chance from a program at the Florida State College.

Our Graduate School has funds for visiting lecturers generally \$100 to \$150 depending, not on the excellence or fame of the lecturer, but on the distance he must travel. This is not too generous on our part but lecturers are generous enough of both time and effort to come. Travel by air can make a surprising difference; if weather

permits, a lecturer can leave Philadelphia in the morning, lecture in Columbus in the afternoon and be home by midnight. And even a flying trip of this sort permits a luncheon or dinner at which the visitor may meet old friends and permits also an opportunity some time during the day for the senior members of Eta Sigma Phi to meet a man whose books have been carefully displayed in the Library. If we can persuade a visitor to stay overnight, we plan a kind of supper party limited to the department and Eta Sigma Phi and invite members of the faculty in for the evening. We do try to make the visitor feel that we appreciate his coming apart from the honorarium.

One point, a small one but oddly important, I have learned and I think it is worth mentioning, if a lecturer is to speak at four o'clock, I drag him away by rude force if necessary at two or two-thirty, take him to my house and give him a full hour's absolute privacy before the lecture. In every case so far the lecturers have been surprisingly grateful.

The idea of an Eta Sigma Phi series of lectures under the auspices of the Graduate School had been in my mind for some years but the problem of an audience troubled me. A lecture on a special or technical subject in our field, no matter how famous the lecturer, would not attract a really satisfactory audience; other and much larger departments are constantly proving this although they may have sufficient numbers within a single department. Finally with the hint from Florida the idea of a series of lectures on mythology occurred to me; the subject is of interest to many in and of itself, and it is of some professional interest to the large departments of English and Fine Arts.

The topic, mythology, suggested a series: what is mythology, which could be a series in itself, and mythology in history, art, and literature. The next problem and not the least was to find able lecturers and in this we were particularly fortunate. Rhys Carpenter gave us a tremendous introduction; about 180 people crowded in and stood against four walls in a room that seated 130. Louis Lord, Walter Agard, and Douglas Bush maintained a very high level and spoke to audiences of 130 to 150. It has been very gratifying to me to have men from other departments ask me how I managed such audiences at this University. The answer is simple if one can find it; an attractive subject and good lecturers.

There is also the matter of publicity. These lectures are, of course, on the printed University Calendar along with a thousand others. The daily papers carried announcements somewhere on an inside page. Our Eta Sigma Phi president made six or eight large colored posters for each lecture which were placed on appropriate bulletin boards, including the Library; the Library also helped by a display of the books of the visiting lecturer. A committee of Eta Sigma Phi dug up the facts of biography and bibliography for each lecturer; we made a digest of this and included the information on a one-page announcement of the lecture. These mimeograph announcements we sent in packages

of from thirty to fifty to departments that would be particularly interested - Fine Arts for Agard's lecture for example - and in smaller numbers to other departments down to and through Anthropology. We had also a mailing list; within the University to anyone (including faculty wives!) we thought might be particularly interested, outside the University to all Columbus Latin teachers and to all classicists within a hundred-mile radius. Some teachers did manage to bring groups of their students and we had carloads of visitors from Kenyon and Ohio University, and letters of thanks from others who would have come if possible. After the first lecture the reputation of the series was established, the best kind of publicity, and we found active cooperation from other departments; for Bush's lecture the English Department came in force and sent majors and graduate students in solid ranks.

Our radio station, WOSU, took down three of the lectures on tape (Agard's required slides) for re-broadcasting and will, I believe, make the three available to other university radio stations who might wish to borrow them, through NAEB. The station is pleased to have such material, originating from this University, available. The Dean of the Graduate School who allotted the funds was pleased with the lectures and could properly feel that the money was well spent. We have felt in Eta Sigma Phi that we were promoting the classics in a very successful way, particularly since we have had such a good time while doing it.

The formal program:

How Myths Are Made - Rhys Carpenter - Nov. 24.
Myth, Legend, and History - Louis E. Lord -
January 19.

Myth and Sculpture - Walter R. Agard - February
27.

Myth and Symbol in English Poetry - Douglas
Bush - April 27.

This is a very long report that can be condensed into three words, subject, speaker, publicity. A copy of this detailed report will be sent on request to anyone interested.

ALUMNI NEWS

LOIS RINSCH, Gamma Alpha Chapter (Indiana State Teachers College), National Secretary of Eta Sigma Phi in 1952-53, has accepted a position as teacher of Latin and English in the high school at Hartford City, Indiana. She has three classes in Latin, and one in English.

PAUL E. CULLEY, associate professor of Classics at New York University's Washington Square College, has been appointed assistant dean of the College of Arts and Sciences in that institution, as announced on October 11 by Dean Thomas Clark Pollock. Professor Culley, a native of Ohio, is an alumnus of Princeton University, where he received his B.A. and M.A. degrees in 1924 and 1928 respectively. Before joining the NYU faculty in 1928 he taught Latin at the Kiskiminetas Springs School, Saltsburg, Pa., where he himself was a student in his youth.

Dolores Wall, president of Beta Omicron

Chapter, Mount Mary College, sends in the following items concerning the alumnae of her chapter:

LENORE WESTFAHL, past president of the chapter, has begun graduate work and is at present engaged as instructor in History at her Alma Mater. MARY J. SHEA received her master's degree from the University of Wisconsin in June and is now teaching Latin in the Wauwatosa High School. RUTH POLZIN has begun her second year of teaching Latin in the Wisconsin Rapids High School. BETSY BARRETT KUEHN and MARY JO HINTON GLEASON listened to wedding bells in preference to offers of teaching Latin, and are now enjoying children of their own. SISTER MIRIAM JOSEPH BROOME is teaching in Stockholm, Sweden, and SISTER MARY ALICE CHINEWORTH is principal of a school in St. Paul, Minnesota. AUDREY ZARNOW BRENNAN has settled down to domestic life after four years of successful teaching of Latin. SISTER ISAAC JOGUES is doing graduate work toward her doctor's degree in Latin and Greek at the Catholic University of America. MARY CANAK PRICE, as active member of the Mount Mary Classical Club during her student days has been elected to honorary membership in Beta Omicron. In her undergraduate days Mrs. Price won as a reward in a historical essay contest a trip to Paris, with all expenses paid.

AMONG THE CHAPTERS

THETA, INDIANA UNIVERSITY

Over eighty citizens of the Bloomington campus attended the lecture that was the first endeavor of Theta chapter at bringing the Classics to the attention of people outside of the department, according to a report received from chapter president Arnold Barbknecht. On October 8, the Reverend Doctor Raymond V. Schoder, professor of Classical literature and archaeology at West Baden College (a branch of Loyola in West Baden, Indiana), presented a talk entitled "The Facets of Greece: Illustrated in Color." The slides which were a mere sampling of over five thousand that were taken by Father Schoder during various trips abroad illustrated and emphasized the natural beauty of Greece.

Faculty members and students of the department of English, as well as all those in attendance, found the slides very educational and enjoyable for their study of Homer's *Odyssey*. Everyone was impressed by the fabulous colors and scenery found in the classical land of Greece.

Two members of Theta Chapter, Marlene Liebttag and Mary Ann Schroder, were elected last spring to Phi Beta Kappa, as announced earlier by the chapter treasurer, Richard Abney.

ALPHA PI, GETTYSBURG COLLEGE

Ruth McComas, Secretary of Alpha Pi Chapter, announces the initiation on April 30 of Mr.

Antony E. Raubitschek, Professor of Classics at Princeton University, to honorary membership in the fraternity. Following the initiation Professor Raubitschek gave an excellent address on the subject, "Language and Literature", in which he emphasized the position of Greek and Roman classics as stabilizing influences upon written and spoken language of today.

In addition to the honorary member, sixteen new actives were installed in the past year. New officers for this year are: President, Patricia Weikel; Vice-President, Thomas Lunn; Secretary, Ruth McComas; Treasurer, Donald Griesmann; Sergeant-at-arms, Daniel Bushman.

BETA LAMBDA, MARYMOUNT COLLEGE

The last meeting of the 1952-53 session of Beta Lambda Chapter was a social occasion held on May 6. "In the midst of Eta Sigma Phi cakes and goodies members promised renewed efforts for the September term," writes Sister Marie Antoinette, adviser of the chapter.

Sister Marie Antoinette flew to Europe on June 19 on a tour directed by Dr. Dietrich von Hildebrand of Fordham University and under the auspices of the Study Abroad, Inc., of New York City.

BETA OMICRON, MOUNT MARY COLLEGE

Dolores Wall, President of Beta Omicron Chapter, writes that her chapter has a number of projects under consideration for the year. First, there will be a Classical Week-End for the chapter and members of the Mount Mary Classical Club, composed mostly of freshmen, who look forward eagerly to election into the chapter when eligible. There are plans for an excursion to the University of Wisconsin at Madison to visit the new library with its fine Humanities section. In preparation also, for the second semester, is a program to be televised on Milwaukee's WTMJ-TV station, which offers to the local colleges an opportunity to appear on its EDUCATION ON PARADE program. "We hope," she says, "to tease the television audience into reading the Homeric epics, if they have not already done so." Members of the chapter plan to present an informal, lively discussion of the Iliad and Odyssey, accompanying the discussion with pantomimes of the more popular episodes. There will be readings, some in Greek, some in translation.

The accompanying snapshot shows this year's president of Beta Omicron (Dolores Wall) with her predecessor (Lenore Westfahl) admiring a Cretan Lekythos presented to Sister Dorothea, faculty adviser, by one of her students, a beautiful girl from the island of Crete.



BETA UPSILON, MARSHALL COLLEGE

Mary De Raimo, retiring Prytanis of Beta Upsilon Chapter, reported in May the initiation of two new members at a meeting held at the home of Dr. Lucy Whitsel, faculty adviser. The following new officers were also installed: President, Helen Milton; Vice-President, Roscoe Hale, Jr.; Secretary, Jeannine Hensley; Treasurer, Mary De Raimo; Sergeant-at-arms, Freda Cavendar. Following the meeting a coffee hour was held, with Miss Lucy Prichard, honorary member and retired professor of Latin and Greek at Marshall College, presiding.

GAMMA GAMMA, WISCONSIN STATE COLLEGE

Greetings have been received from Robert J. Flegl, chapter president of Gamma Gamma Chapter. "The general program for the year," he says, "will deal with the mythology in astronomy. A study of the constellations will prove interesting if we don't freeze to death on those frosty nights." Jo Ann Sweeney, national secretary and a member of the chapter, reporting in somewhat greater detail, says that the chapter plans to drive to the Chicago Planetarium to study the role that mythology plays in the stars. The group plans also to visit the Greek and Roman exhibits in the Museum of Natural History while in Chicago. The chapter is looking forward to its participation in the second all state convention of Eta Sigma Phi in Milwaukee, with Beta Sigma Chapter at Marquette University the host chapter.

GAMMA DELTA, YESHIVA UNIVERSITY

Gamma Delta Chapter celebrated its first anniversary at a public meeting held on May 13. Addresses were made by chapter president Manfred Fulda on "The Value of the Classical Tradition," by Professor Floch, faculty adviser, on "Some New Aspects of the Study of Latin," and by the guest lecturer of the evening, Professor Bruno Kisch, on "Classic and Modern Concepts of the Structure of Matter". Refreshments were then served after which the chapter met in closed session to initiate thirteen new active members and Dr. Floch as an honorary member. The following were elected officers for the next academic year: President, Manfred Fulda (for his third term); Vice-President, Herschel Weinberger; Secretary-Treasurer, Abraham Marthan.

✻

WISCONSIN CHAPTERS HOLD FIRST STATE CONVENTION

Marilyn A. Johnson, Secretary of the Gamma Epsilon Chapter, University of Wisconsin, reports that the chapter, under the general direction of Harold Evjen, was host to the first Wisconsin State Convention of Eta Sigma Phi on May 1-2, 1953. The meeting was attended by some 50 delegates from the state chapters at Marquette University, Wisconsin State College at Milwaukee, Lawrence College, Mount Mary College, and the

University of Wisconsin.

The report in full continues:

"The program got under way Friday afternoon with an address by Prof. Paul MacKendrick who directed the first Latin Workshop at the University of Wisconsin in many years during the summer school of 1952. His remarks gave many prospective teachers present valuable ideas which they can carry into the classroom with them. He also intimated that this workshop would be repeated in the summer of 1954. The many present were agreed that, with such materials and aids as Prof. MacKendrick presented, the teaching of Latin would be far easier in the future.

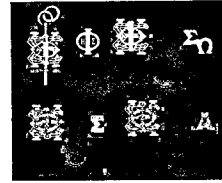
"After this lecture, delegates were shown around the beautiful campus of the University of Wisconsin and its very impressive Memorial Union.

"At six o'clock guests sat down to dinner at the University Club, after which they were treated to a talk by Prof. Alfred Dorjahn, chairman of the department of Classics at Northwestern University. After bringing greeting from Beta Chapter, he spoke briefly on Greek Education, interspersing his remarks with amusing anecdotes which put all into a most receptive mood for the rest of the events of the day.

"Freshmen students of the Integrated Liberal Studies Program at the University of Wisconsin, under the direction of Hugh McLean, graduate student in Latin and prytanis of the local chapter, presented Plautus' Menaechmi on Friday evening for the delegates and friends of the Classics. Prof. J. P. Heironimus introduced the play with a few remarks on Roman comedy. The Menaechmi was given in a new translation especially prepared for this performance by graduate students in the department of Classics at the University of Wisconsin.

"After the play, delegates were invited to meet the cast at the University Club over coffee and cake.

"On Saturday morning at 9:30 delegates again assembled in the Memorial Union for round table discussions and a general business meeting. This meeting provided so much discussion that it was adjourned until the afternoon. Delegates met for luncheon in the Union, and later resumed their conferences at which they exchanged ideas on financing, meetings, and high school liaisons, etc. with great benefit to all. At 3:00 p.m. the convention was brought to an end after the following resolutions were passed: (1) that an attempt be made to have annual state conventions, preferably in the fall; (2) that the next state convention would be held in the fall of 1953; (3) that the three chapters in the Milwaukee area rotate the donating of medals for proficiency, a project which was begun by Mount Mary College; (4) that an effort be made to introduce chapters of Eta Sigma Phi at the five other accredited schools in Wisconsin, each present chapter contacting one school; (6) that some sort of pooling of transportation should be tried for attending national conventions in the future."



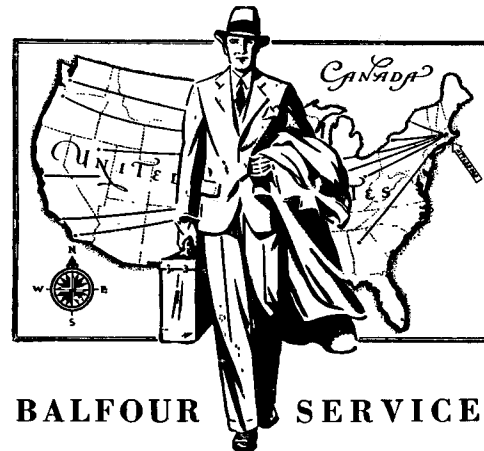
OFFICIAL ETA SIGMA PHI INSIGNIA

- Plain badge, 10K gold \$5.50
- Close set pearl badge 8.50
- Crown set pearl badge 13.25
- Pledge pin 1.00
- Official plain badge key 6.50

20% Federal Tax and any State Tax in effect must be added to prices.

ORDERS must be received from Chapter Officers.

L. G. BALFOUR COMPANY
Attleboro, Massachusetts



BALFOUR SERVICE

FROM COAST TO COAST

Branch Stores are located in educational centers throughout the United States for your convenience. Balfour representatives make frequent calls on fraternity chapters to display new and attractive Balfour merchandise.

- | | | |
|--|--|---|
| ALABAMA
Birmingham | MARYLAND
Baltimore | OHIO
Columbus
Kenton |
| CALIFORNIA
Los Angeles
San Francisco | MASSACHUSETTS
Attleboro
Boston | OKLAHOMA
Oklahoma City |
| COLORADO
Boulder
Denver | MICHIGAN
Ann Arbor | PENNSYLVANIA
Bethlehem
Philadelphia
Pittsburgh |
| DISTRICT OF COLUMBIA
Washington | MINNESOTA
Minneapolis | State College |
| GEORGIA
Atlanta | MISSOURI
Columbia
Kansas City
St. Louis | SOUTH CAROLINA
Columbia |
| ILLINOIS
Champaign
Chicago | NEBRASKA
Lincoln | TENNESSEE
Knoxville |
| INDIANA
Bloomington
Indianapolis | NEW HAMPSHIRE
Durham
Hanover | TEXAS
Austin
Dallas
Houston |
| IOWA
Des Moines
Iowa City | NEW YORK
Brooklyn
Ithaca
New York City
Waterford | UTAH
Salt Lake City |
| KANSAS
Lawrence | NORTH CAROLINA
Durham | VIRGINIA
Lexington
Richmond |
| KENTUCKY
Louisville | OHIO
Cincinnati
Cleveland | WASHINGTON
Fulman
Seattle |
| LOUISIANA
New Orleans | | WEST VIRGINIA
Morgantown |
| | | WISCONSIN
Madison |

L. G. BALFOUR COMPANY
Factories: ATTLEBORO, MASSACHUSETTS

CURRENTLY ACTIVE CHAPTERS

- Beta: Northwestern University, Evanston, Illinois
Prytanis: Thomas A. Brooks
- Gamma: Ohio University, Athens, Ohio
Prytanis: David L. White
- Delta: Franklin College, Franklin, Indiana
Prytanis: William Bridges
- Epsilon: State University of Iowa, Iowa City, Iowa
Prytanis: Patricia Caldwell
- Zeta: Denison University, Granville, Ohio
Faculty Adviser: Professor L. Richard Dean
- Eta: Florida State University, Tallahassee, Fla.
Prytanis: Edward F. Olechovsky
- Theta: Indiana University, Bloomington, Indiana
Prytanis: Arnold Barbknecht
- Lambda: University of Mississippi, University, Miss.
Prytanis: William Dulaney
- Pi: Birmingham-Southern College, Birmingham, Ala.
Prytanis: Ann Barr
- Sigma: Miami University, Oxford, Ohio
Prytanis: Clyde Smith
- Tau: University of Kentucky, Lexington, Kentucky
Prytanis: Mary Carlyle Winkler
- Upsilon: Mississippi State College for Women
Columbus, Mississippi
Prytanis: Roxie McClure
- Psi: Vanderbilt University, Nashville, Tennessee
Faculty Adviser: Professor H. Lloyd Stow
- Omega: College of William and Mary
Williamsburg, Virginia
Prytanis: Janice E. Ferrell
- Alpha Delta: Agnes Scott College, Decatur, Georgia
Prytanis: Nancy McLaurine Lee
- Alpha Epsilon: Lehigh University, Bethlehem, Pa.
Prytanis: James J. Hill, Jr.
- Alpha Theta: Hunter College, New York, N. Y.
Prytanis:
- Alpha Xi: Washington University, St. Louis, Mo.
Prytanis: Richard Fox
- Alpha Omicron: Lawrence College, Appleton, Wis.
Prytanis: Jim Samter
- Alpha Pi: Gettysburg College, Gettysburg, Pa.
Prytanis: Patricia Weikel
- Alpha Rho: Muhlenberg College, Allentown, Pa.
Prytanis: Robert J. Wilde
- Alpha Tau: Ohio State University, Columbus, Ohio
Prytanis: Harry C. Rutledge
- Alpha Upsilon: Wooster College, Wooster, Ohio
Prytanis: Ronald Austin
- Alpha Phi: Millsaps College, Jackson, Miss.
Prytanis: Roy Epperson
- Alpha Chi: Tulane University, New Orleans, La.
Prytanis: Sterling Peebles
- Alpha Psi: Washington and Jefferson College,
Washington, Pennsylvania
Prytanis: George Lanz
- Alpha Omega: Louisiana State University
Baton Rouge, Louisiana
Prytanis: Wilmer P. Murphy
- Beta Alpha: University of South Dakota,
Vermillion, South Dakota
Prytanis: Dorothy Jaquith
- Beta Gamma: Westhampton College, University of
Richmond, Richmond, Virginia
Prytanis: Geraldine Kantner
- Beta Delta: University of Tennessee, Knoxville, Tenn.
Prytanis: Jane Byington
- Beta Zeta: Saint Louis University, Saint Louis, Mo.
Prytanis: Donn Riley
- Beta Eta: Westminster College, Fulton, Missouri
Prytanis: Joe Trower
- Beta Theta: Hampden-Sydney College,
Hampden-Sydney, Virginia
Prytanis: C. Scott Kelly
- Beta Iota: Wake Forest College, Wake Forest, N.C.
Prytanis: Richard C. Barnett
- Beta Kappa: College of Notre Dame of Maryland,
Baltimore, Maryland
Prytanis: Geraldine Quinn
- Beta Lambda: Marymount College, Salina, Kansas
Prytanis: Patricia Norton
- Beta Mu: Butler University, Indianapolis, Indiana
Prytanis: Harold Cline
- Beta Nu: Mary Washington College,
Fredericksburg, Virginia
Prytanis: Ann E. Perkinson
- Beta Xi: Rosary College, River Forest, Illinois
Prytanis: Catharine Williams
- Beta Omicron: Mount Mary College, Milwaukee, Wis.
Prytanis: Dolores Wall
- Beta Pi: University of Arkansas, Fayetteville, Ark.
Prytanis: James G. Collier
- Beta Rho: Duke University, Durham, North Carolina
Prytanis: Shirley Markee
- Beta Sigma: Marquette University, Milwaukee, Wis.
Prytanis: Lawrence Kelly
- Beta Tau: Georgetown University, Washington, D.C.
Prytanis: Michael W. Shea
- Beta Upsilon: Marshall College, Huntington, W. Va.
Prytanis: Helen Milton
- Beta Phi: Adelphi College, Garden City, New York
Faculty Adviser: Prof. Frederika Blankner
- Beta Chi: Loyola College, Baltimore, Maryland
Prytanis: Leroy A. Wagner
- Beta Psi: Southwestern at Memphis, Memphis, Tenn.
Prytanis: Douglas Marsh
- Beta Omega: Ball State Teachers College, Muncie, Ind.
Prytanis: Phyllis Harris
- Gamma Alpha: Indiana State Teachers College
Terre Haute, Indiana
Prytanis: Jack Roberts
- Gamma Beta: Bowling Green State University
Bowling Green, Ohio
Prytanis: David Moe
- Gamma Gamma: Wisconsin State College, Milwaukee, Wis.
Prytanis: Robert J. Flegl
- Gamma Delta: Yeshiva University, New York, N. Y.
Prytanis: Manfred Fulda
- Gamma Epsilon: University of Wisconsin, Madison, Wis.
Prytanis: Hugh McLean
- Gamma Zeta: Albion College, Albion, Michigan
Prytanis: Wayne Keehn
- Gamma Eta: Louisiana College, Pineville, La.
Prytanis: Kenneth F. Wall
- Gamma Theta: Georgetown College, Georgetown, Ky.
Prytanis: Mary Ruth Beckett

SONG FOR ETA SIGMA PHI

- A. Connor

Bear ing beau ty's flame, bending our

hearts to your name Your ancient splen dor we cher ish

now, youth ful dreams tell us how;

Stu dents look to your light A glory ev - er

bright Our loy - al - ty we pledge to

you , Eta Sig ma Phi.