



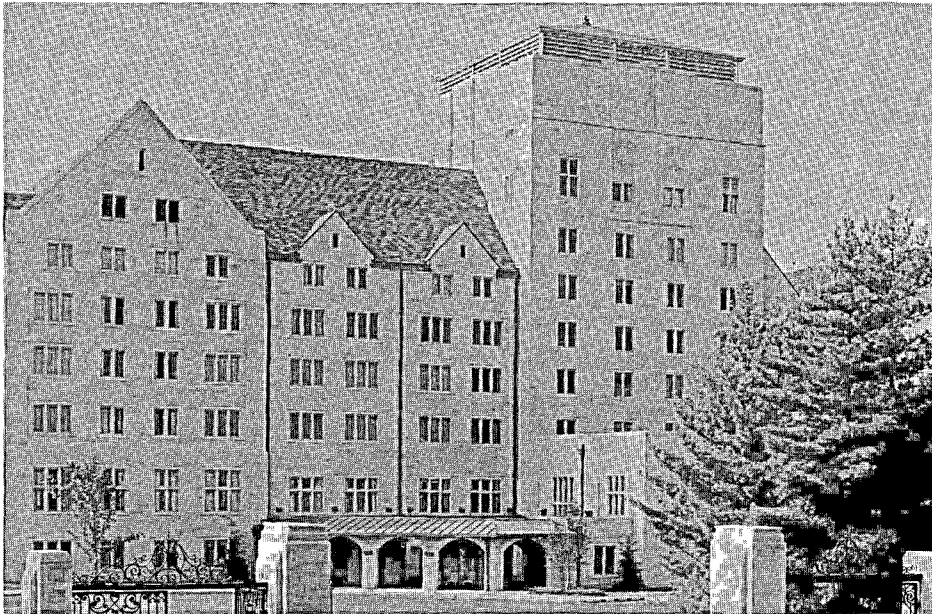
Nuntius

Published by Eta Sigma Phi

VOLUME 36

MARCH, 1962

NUMBER 3



Indiana Memorial Union, Indiana University

Photograph courtesy of Indiana University News Bureau

Message from our Megas Prytanis

Dear Members of Eta Sigma Phi:

By now many of you have probably inducted your new members into Eta Sigma Phi. I should like to congratulate each new member and extend a hearty welcome from Eta Sigma Phi. Through your enthusiasm the Fraternity will grow, spreading its beams of classical learning throughout the United States. No other honorary fraternity holds as the basis for its founding such a glorious civilization as does Eta Sigma Phi. Your task in promoting this culture in our modern world will indeed be a joyous one.

Our chapters work together closely on the national level so that they can view problems arising and attempt solutions. Thus, the national convention has been set up to serve as a "clearing house" for Eta Sigma Phi. On March 23 and 24 Theta Chapter will host the Thirty-fourth National Convention on the campus of Indiana University. It is quite important that each chapter be represented; for only through rep-

resentation can you express your own chapter's views, at the same time receiving valuable information from other chapters. Problems arising can be discussed, solved and used in avoiding similar questions in the future.

A special word of thanks should be given to Miss Mary Jo Moss and Professor Norman T. Pratt, Jr., of Indiana University, both of whom already have spent many hours in the organization of the coming national convention. At the same time Professor H. R. Butts should be commended for his remarkable job as Executive Secretary of the Fraternity. I can speak for each member, I am sure, in expressing much gratitude for their services in these important matters.

I shall be looking forward to meeting each one of you at the Convention.

Ex animo,

Carrick R. Inabnett
CARRICK R. INABNETT
Megas Prytanis

National Convention at Theta Chapter

Theta Chapter at Indiana University is awaiting the arrival of the delegates to the Thirty-fourth National Convention of Eta Sigma Phi Fraternity on March 23 and 24. Our hosts will include Prytanis Gregory Nagy of Theta Chapter, Megas Grammateus Mary Jo Moss, Professor Edwin S. Ramage, Adviser of Theta Chapter, and Professor Norman T. Pratt, Jr., Chairman of the Department of Classics at Indiana University and a member of our Board of Trustees. Theta Chapter is being assisted by Beta Mu Chapter at Butler University, Indianapolis, Gamma Alpha Chapter at Indiana State Teachers College, Terre Haute, and Gamma Iota Chapter at Wabash College, Crawfordsville. The convention committee completed all of its plans for the convention last year and now only last minute details await attention.

Crawfordsville. The convention committee completed all of its plans for the convention last year and now only last minute details await attention.

This should be our most enjoyable national meeting since for the first time in our history we shall enjoy the utopian conditions of having meeting rooms and housing for the delegates under one roof on a university campus. The spacious and modern quarters of the Indiana Memorial Union have been placed at our disposal. Although this is one of the oldest college union organizations in the United States, dating, from 1909, the recent expansion program provides the utmost in comfort and pleasure in this collegiate Gothic structure of Indiana limestone. Among the outstanding conveniences are comfortable sleeping rooms, beautiful dining rooms with exquisite cuisine, air conditioning, escalators, recreational facilities, and spacious lounges.

Indiana University is by the laws of the State of Indiana the state university of Indiana and head of the state's

Tentative Program

Thirty-Fourth National Convention

To Be Held at Bloomington, Indiana, March 23 and 24, 1962

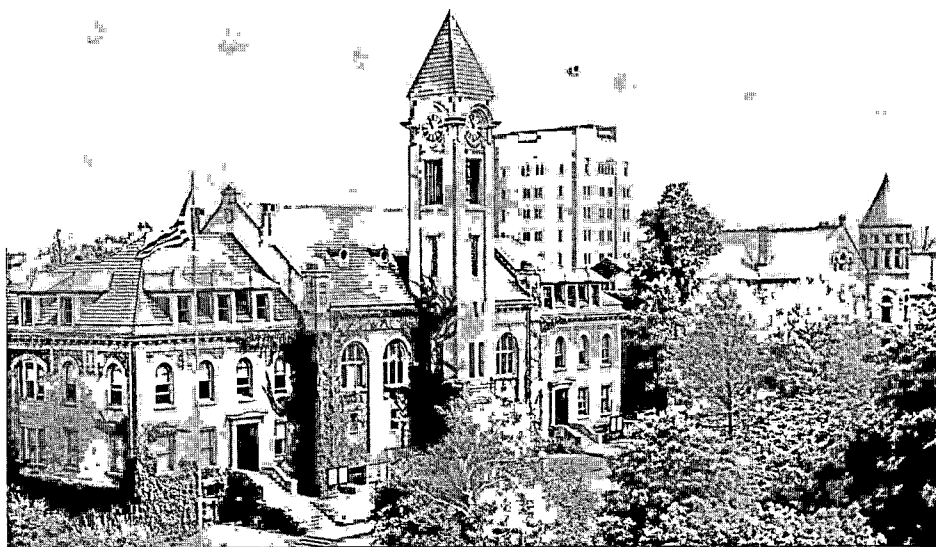
Upon the Invitation of Theta Chapter, Indiana University

Friday, March 23, 1962

- 8:00- 9:00 A.M. Registration, Conference Bureau Lounge, Ground Floor, Indiana Memorial Union
- 9:00 A.M. First General Session, Frangipani Room, Ground Floor, Indiana Memorial Union
Address of Welcome, Dr. Herman B. Wells, President, Indiana University
Response, Megas Prytanis Carrick Inabnett
- 9:30 A.M. Business Meeting
Minutes of the Thirty-third National Convention
Roll Call of Chapters and Chapter Reports
Report of Megas Chrysophylax
Report of Chairman of the Board of Trustees
Report of the Executive Secretary
Report of Standing Committees
- 12:00 Noon Lunch
- 1:30 P.M. Second General Session, Frangipani Room
Appointment of Committees
Report of Committee on Expansion and Reactivation
Business
Addresses by Eta Sigma Phi Scholars of Summer 1961
- 3:30 P.M. Tour the Campus of Indiana University and special displays
- 6:30 P.M. Subscription Banquet, Frangipani Room
Marionette Performance of Plautus' MENAECHEMI
Professor Peter Arnott
Department of Classics, State University of Iowa
Following the performance the members of the convention will be guests of Theta Chapter at a reception in the Frangipani Room

Saturday, March 24, 1962

- 8:30 A.M. Third General Session, Room 109, Ballantine Hall
Business meeting (concluded)
Election and Installation of new officers
Farewell Address, Professor Smith Palmer Bovie
Department of Classics, Indiana University
- 1:00 P.M. Adjournment of Thirty-fourth National Convention



View of Campus of Indiana University, showing left to right, Student Building, Union Building Tower, and Maxwell Hall

Photograph courtesy of Indiana University News Bureau

public school system. The main campus of the University is at Bloomington, located just fifty-one miles southwest of Indianapolis, in the heart of scenic southern Indiana. The campus itself is known for its natural beauty. Bloomington is a small city but Indiana University is able to provide cultural advantages seldom duplicated in metropolitan areas. These include annual performances by the Metropolitan Opera Association, performances by the world's greatest orchestras under famous conductors, recitalists, lecturers, and presentations by leading Broadway dramatic and ballet groups. Equally important to the student is the opportunity which is available to him of participating in one or more of the forty musical groups on the campus and in the programs of the numerous student clubs and religious organizations.

Indiana University, founded in 1820, is the oldest major state university west of the Alleghenies. It includes a main campus of 1700 acres with 250 buildings at Bloomington, a Medical Center in Indianapolis which covers almost 80 acres, and ten extension centers throughout the state. The total enrollment is about 27,000 students, 13,000 of whom are on the Bloomington campus. In contrast with the one professor and ten students in two courses of 1820 there are approximately 1200 faculty members who offer two hundred areas of concentration in the ten schools and colleges. Megas Grammateus Mary Jo Moss very kindly supplied the editor with information from which the above was written. She is a most enthusiastic booster for the University and we would recommend her for its publicity department. She says "This University is so vast that one could go on for pages telling about accomplishments, advancements, programs, facilities, services, etc. We really have a great University!" Mary Jo points out that the University is recognized for many firsts, e. g., the first university in the middle west to have a law school, the first to be visited by the Metropolitan Opera and it is a leader in musical training with a School of Music which has fifteen faculty members with Metropolitan Opera backgrounds, a professional conductor, and a professional quartet in residence. The University is outstanding in language training, in science education with a Nobel Prize winner on its faculty, in medicine and dentistry, and in library facilities.

Not only will our delegates and guests enjoy the comfortable quarters of this great institution of higher learning but also there will be outstanding

entertainment. Professor Peter Arnott of the Department of Classics at the State University of Iowa, home of Epsilon Chapter, will give a marionette performance of Plautus' *ME-NAECHMI*. This is truly a rare treat for the members of the convention, since Professor Arnott is much sought after and his performances are given the highest praises. Professor Arnott, who is a distinguished scholar and authority on the Greek theater, is also a trained actor and has had professional experience. He makes his own marionettes and the theater in which they perform and also he handles them and speaks their parts which are from his own translations.

Professor Smith Palmer Bovie of the Department of Classics at Indiana University will be our speaker on Saturday morning. Professor Bovie is a distinguished scholar and his translations of the classics are well liked. He is the very popular director of the Summer Session of the American Academy in Rome. It is also planned for our Eta Sigma Phi scholars of last summer to speak to us about their experiences.

Bloomington can be reached by Lake Central Airlines, Monon Railroad, and Greyhound and Trailways buses. Indianapolis, which is only 51 miles away, has excellent transportation facilities and from here there are six buses daily to Bloomington. If there should be sufficient demand, the host chapter and other chapters in Indiana will arrange transportation from Indianapolis. Most of our delegates will doubtless come by car, since there are so many chapters within driving distance.

Rooms in the Indiana Memorial Union are available from \$6.50 for single rooms and for rooms with twin beds from \$10.00. If you have not made your reservation, requests should be addressed to Reservations Office, Conference #81, Indiana Memorial Union, Indiana University, Bloomington, Indiana. We are informed that the authorities of the Union will not hold the block of rooms reserved for our meeting after March 7. It will be very difficult to obtain a reservation after that date, so please make your reservation before March 7.

Reservations for the banquet on Friday night are to be sent to Miss Mary Jo Moss, Tower E 409, Bloomington, Indiana. These must reach her before March 19. If you prefer fish, this should be indicated on your reservation.

We have not been notified of the

arrangements with *Jupiter Pluvius et Tonans* or *is qui nive pruinaque terram obruit* but our hosts have been so thorough in their preparations that this must not have been overlooked. Come to Bloomington and find out.

Convention Business

Petitions for charters to found chapters of Eta Sigma Phi have been received from Classical Clubs of two schools, both of which presented petitions at our last convention and were not approved. One is from the Classical Club of Belhaven College at Jackson, Mississippi. Founded in 1883 Belhaven College is a four-year liberal arts college with an enrollment of 266; of these 111 are enrolled in the Department of Classics. The Club was founded in February, 1961 and its present membership is not given in the petition. The other is from Marywood College of Scranton, Pennsylvania. Founded in 1916 Marywood College has an enrollment of 1013; of these 178 are enrolled in the Department of Classics. The Classical Forum was founded in January, 1961 and has a membership of 48. Both of the petitions are approved by the Presidents of the colleges.

With Our Scholar In Rome

Miss Marianne Jansen, Eta Sigma Phi Scholar at the American Academy in Rome during the summer of 1961, alumna of Beta Omicron Chapter at Mount Mary College and Instructor in Latin and English at West Division High School of Milwaukee, tells of her experiences last summer in the following excerpts from a recent letter to the National Office. She says:

I was both stunned and thrilled when Dr. Regenos phoned me last March to inform me that Eta Sigma Phi was offering me the scholarship to the American Academy and to ask if I was interested. It did not take me two seconds to come up with an answer! I had originally applied for the scholarship to the American School of Classical Studies at Athens, feeling at the time that, since I had visited Rome several years before, I might profit more from a six week session in Greece. After sending in my application, I reconsidered and wished that I had stated a preference for Rome, so Dr. Regenos' call was an answer to everything I had hoped for. And, since the Eta Sigma Phi scholarship covered the cost of my room and board and the Academy

granted me a tuition scholarship, I was able to fly to Athens and see Delphi and a few of the Aegean isles during a long weekend. The entire summer turned out to be a perfect dream come true.

I saw Rome and the American Academy for the first time in the summer of 1956 while on a European tour with a group of students and alumnae of my college, Mount Mary. We spent six days in Rome then, but now I realize more than ever that we did not even begin to know the city. There are really so many Romes—Classical Rome, Christian Rome, Medieval Rome, Renaissance Rome, Modern Rome—and the guided tours, even the best of them, can only include in their itineraries a minute sampling of each and make one ravenously hungry for more. One beautiful afternoon that July Sister Mary Dorothea and I took a leisurely walk from our pensione on the Janiculum through the magnificent avenues of umbrella pines, stopped for a "coke" in Garibaldi Square, which affords an unsurpassed view of all Rome, and climbed up to the *Accademia Americana*. The building which houses the Academy is a beautiful one, typical of nineteenth century Roman architecture. Actually it is only about twenty-five years old, but was done in this style so that it would be in keeping with the surrounding buildings. We were warmly received and taken on a "grand tour" of the orange stucco structure so characteristic of Rome, its lecture hall, living quarters, and charming Pompeian-type courtyard, where even on the hottest August days a dry refreshing breeze and the sound of water trickling from a small fountain in the center revive the weary student. As a result of this visit, I had a vivid picture of the school that was to be the center of my activities during my six weeks stay in Rome before I left home, with the result that I felt I was going to visit an old friend. I think, however, that I would have felt at home in Rome immediately, even if I had never been more than fifty miles from home in my life. Anyone who has ever been there will tell you that Rome has a certain intangible warmth which no other city possesses, especially, I might add, for the student of antiquities. You never really feel you are a stranger there. I think I could spend six months in Rome and never be homesick or run out of things to do. There is no other city I have visited about which I can say that, and the list includes Paris, Athens, London, and New York!

(Continued on Page 21)

NUNTIUS

VOL. 36

MARCH, 1962

No. 3

Published four times during the academic year: November 15, January 15, March 15, and May 15. Sent without charge to all active members of Eta Sigma Phi, for each year in which dues are paid. Price to others: \$1.00 per year. All communications regarding publication or business should be addressed to *The Editor: H. R. Butts, Birmingham-Southern College, Birmingham 4, Alabama.*

Official Publication of Eta Sigma Phi, National Honorary Classical Fraternity, Founded in 1914, Nationalized in 1924, Incorporated under the laws of the State of Illinois, June 20, 1927.

Published By Vulcan Printing & Lithographing, Birmingham, Alabama

OFFICERS

CARRICK R. INABNETT—Tulane University, New Orleans, Louisiana.....National President
 THOMAS H. CHMIELEWSKI—Marquette University, Milwaukee, Wisconsin.....National Vice-President
 MARY JO MOSS—Indiana University, Bloomington, Indiana.....National Secretary
 SANDRA EPPERSON—Monmouth College, Monmouth, Illinois.....National Treasurer

BOARD OF DIRECTORS

Professor Graydon W. Regenos (1964)
 Tulane University, New Orleans, Louisiana, CHAIRMAN
 Professor Gertrude Ewing (1963)
 Indiana State Teachers College, Terre Haute, Indiana
 Professor William C. Korfmacher (1964)
 Saint Louis University, Saint Louis, Missouri
 Professor Paul R. Murphy (1962)
 Ohio University, Athens, Ohio
 Professor Norman T. Pratt, Jr. (1962)
 Indiana University, Bloomington, Indiana

HONORARY PRESIDENT

Professor Gertrude Smith
 University of Chicago, Chicago 37, Illinois

EXECUTIVE SECRETARY

Professor H. R. Butts
 Birmingham-Southern College, Birmingham 4, Alabama

From Your Executive Secretary

Although we do not like to be critical, we feel that we must point out that there has been a noticeable slowness and lack of early cooperation on the part of more chapters than usual this year. The questionnaire which was requested to be returned by October 31 has not been received from ten chapters. Fewer chapters have sent in fees for new initiates. News items for NUNTIUS have been very scarce. Several chapters sent in requests for contest material after the deadline. We regret to have to mention this but the success of the Fraternity depends upon the cooperation of all chapters. Please keep this in mind when you decide to put off for one more day your obligations to the Fraternity.

We wish to express our gratitude to those who have been prompt, and this means most of you. It is your courteous

cooperation which makes my work with the Fraternity a pleasant experience.

You will doubtless wish to point out that the January NUNTIUS was late. We are sorry about this but Birmingham experienced three inches of snow in January—an event comparable in its effects upon local business to a blizzard elsewhere! This issue has been published early in order to bring the convention to your attention as early as possible.

We print below a check list, modified from previous lists, of March duties for chapters. Your willing cooperation is requested.

1. Make reservations for your delegates to the National Convention before March 7.

2. Report all new initiates not previously reported to the National Office at once in order that your chapter may be maintained on the Roll of Active Chapters.

3. Prepare the report of activities of your chapter for the past year for the National Convention.

4. If your chapter is unable to be represented at the convention, send your report with a letter of regret that you cannot attend to the Megas Grammateus, Miss Jo Moss, Tower E 409, Bloomington, Indiana. This is required by a resolution passed by the 1953 National Convention.

5. If you would like to invite the Thirty-fifth National Convention to meet with your chapter, an invitation should be addressed to the Megas Grammateus. It would be well for delegates who plan to extend an invitation for the National Convention to receive approval of this invitation from their schools before presenting them to the members of the convention.

6. Send news items to NUNTIUS.

7. Make arrangements with the local high schools to award the Eta Sigma Phi medals and order the ones needed from the Executive Secretary.

Eta Sigma Pi Medals

The records of the National Office show that the following chapters awarded Eta Sigma Phi medals in local high schools last year: Lambda, University of Mississippi; Pi, Birmingham-Southern College; Tau, University of Kentucky; Omega, College of William and Mary; Alpha Omicron, Lawrence College; Alpha Chi, Tulane University; Alpha Psi, Washington and Jefferson College; Beta Kappa, College of Notre Dame of Maryland; Beta Mu, Butler University; Beta Omicron, Mount Mary College; Beta Upsilon, Marshall University; Gamma Alpha, Indiana State College; Gamma Theta, Georgetown College; Gamma Iota, Wabash College; Gamma Tau, Mississippi College; and Gamma Upsilon, Austin-College. This is an impressive list, and we hope that there have not been any omissions. We hope that all of these will award medals again this year and that many who did not award them last year will do so this year.

There are three medals available: for fourth year students: a large silver medal at \$3.75 and a small silver medal at \$1.25; for second year students: a bronze medal at \$1.25. The medals are neat and attractive, and they are appreciated by the recipients. Each of the medals bears on its obverse a representation of the Victory of Paeonius as restored, the initials of our Fraternity, and the quotation *Mihi Res, Non Me. Rebus* from Horace, EPISTLE 1. 1. 19. The reverse shows the Parthenon and the words *Praestantia Linguarum Classicarum*.

The medals are intended to encourage the study of Latin in high schools and they have been successful in this for over a quarter of a century. They are useful to award outstanding students. And also they remind the student that Latin is as important as any other subject in the curriculum, but he may not feel that this is true if the French government, the Spanish consul, or a local society of German-speaking people gives an award for excellent work in a language but no award is given in Latin.

With Our Scholar in Rome — Continued

It is really unfortunate that most tourists travel so far and spend so much money only to stay in Rome for five or six days. Even we, who were privileged to stay for six weeks, would have found it difficult to cover adequately Classical Rome alone if we had not had the expert guidance of Professor Smith Palmer Bovie and his able assistant, Mr. Herbert Fisher. We spent two mornings in the Forum Romanum, two on the Palatine Hill, one in the Colosseum and remains of the Domus Aurea of Nero, another in the ruins of the Imperial Fora, still another in the Campus Martius area, and one in each of the following museums: the Villa Giulia, which houses a breath-taking collection of Etruscan objects; the National Museum in the ruins of the Baths of Diocletian; the Capitoline and Conservatori Museums, which are noteworthy for statuary, primarily busts of emperors and their families, and friezes from triumphal arches no longer standing in the city; and the Lateran Museum, where, among more statuary, we saw magnificent mosaic floors removed from the ruins of the Baths of Caracalla. We spent a full day at each of the following sites: Veii, where we inspected an ancient temple

and Etruscan "bee-hive" tombs (inside and out); Tarquinia (more tombs, this time with wall paintings from the Fifth Century B. C. in still-vivid colors, and a truly unique pair of perfectly proportioned horses in a remarkable state of preservation); Palestrina, ancient Praeneste, with its Temple of Fortune; Hadrian's and Horace's villas near Tivoli, ancient Tibur; Ostia; and Tusculum and Lake Nemi, where we viewed the remnants of the imperial pleasure boats. Incidentally, these boats are among the few wooden objects of archaeological interest dating from the classical period, and were burned by the Nazis during their retreat from Rome. The Italians have left the museum which housed them exactly as they found it after the departure of the Germans, and one can still see the twisted steel frames that once supported the boats, the charred ceiling, and the viciously hacked walls and steps. This is on one side. The other side is still intact and holds fascinating objects, such as anchors, stands that once suspended the rope "railings," pieces of iron from the hulls, door knobs, and scale models of the original boats.

On the days when we were "in the field" during just the morning hours, we returned to the Academy for lunch in the breeze-cooled courtyard, then retired to the lecture room where we were briefed on procedures for forthcoming field trips. Then, for the remainder of the afternoon, Professor Bovie presented readings from such authors as Horace, Livy, and Vergil, together with his impressions of these men in the light of their times. We also examined the *Res Gestae* of Augustus and were introduced to the science of epigraphy by Mr. Fisher.

There are so many places which we visited and so many enriching experiences which I have failed to mention, but I could write a book of five hundred pages and still not include them all. I took approximately three hundred slides which I have shown to my classes and friends, and I hope that I have at least sown seed of interest in things Roman. I can remember hearing my father say, when I was still in grade school, "Get the most you possibly can out of your education. It is something that becomes a part of you, and no one can ever take it away from you, even if he takes everything you own." Since education is the only thing which cannot be lost, it is the most nearly perfect gift anyone can receive, and I am deeply grateful to Eta Sigma Phi for awarding me the summer scholarship to Rome in 1961.

AMONG THE CHAPTERS

PI

Birmingham-Southern College

At its last meeting the members of Pi Chapter voted to continue its policy of awarding Eta Sigma Phi medals in the local high schools. This year as in the past the chapter will award eight bronze medals and two silver medals. Professor O. C. Weaver of the Department of Philosophy spoke to the chapter on some contributions to the early church by Greek Christians.

ALPHA OMICRON

Lawrence College

Alpha Omicron Chapter has recently initiated new members and some of the initiates participated in the Eta Sigma Phi Contests. Through an error in the records of the last national convention Alpha Omicron Chapter was not credited with the attendance of its delegate. Miss Marcia Krause represented the chapter at Milwaukee and we are pleased to correct this error. Professor Maurice P. Cunningham, Adviser of the Chapter, very kindly called this to our attention.

BETA XI

Rosary College

Hyparchos Donna Curtin of Beta Xi Chapter reported the initiation of four new members by the chapter on January 9. After the initiation the chapter enjoyed an interesting lecture on "The American and European Approaches to Classics" by Mr. Richard Carbray of Lake Forest Academy who has studied and traveled abroad extensively. He emphasized that Americans are just as successful as the Europeans in keeping Classics alive.

BETA SIGMA

Marquette University

Chrysophylax Thomas F. Kaye of Beta Sigma Chapter says that this is

The Endowment Fund

Only two contributions have been made to the Endowment Fund this year. One was made by Professor Lillian Lawler, who is now a member of Epsilon Chapter, and the other came from Gamma Omega Chapter of Baylor University, which forwarded its surplus funds of \$31.21 to the Fund when the chapter disbanded recently.

Although we were able to announce in the first issue of this year that we had reached our first goal, this does not mean that contributions are not still needed and requested. We urge each chapter to make contributions to the Endowment Fund in order that we may be able to continue our scholarship program.

Contributors To The Endowment Fund

Pi, Birmingham-Southern College (bis)	Douglas C. Burger
Beta Upsilon, Marshall University (quater)	Beta Zeta, Saint Louis University
Alpha Chi, Tulane University (bis)	Alpha Delta, Agnes Scott College
Gamma Alpha, Indiana State Teachers College (ter)	Gamma Tau, Mississippi College (bis)
Beta Alpha, State University of South Dakota (bis)	Dr. Lillian B. Lawler (bis)
Beta Lambda, Marymount College (bis)	Gamma Xi, Howard University
Gamma, Ohio University	Gamma Nu, Montclair State College
Gamma Gamma, University of Wisconsin-Milwaukee (bis)	Beta Omicron, Mount Mary College
Anonymous Donor	Gamma Omicron, Monmouth College
Alpha Upsilon, The College of Wooster (bis)	Beta Nu, Mary Washington College
Beta Kappa, College of Notre Dame of Maryland (bis)	Beta Theta, Hampden-Sydney College
	Beta Sigma, Marquette University
	Gamma Omega, Baylor University

really a busy year for Beta Sigma. He continues: "We have almost completed the first set of our slide program. There will be a series of twenty slides in a set accompanied by a lecture guide. The sets will be made available to high school teachers and clubs for a small fee. We are also spending a lot of time setting up a state newspaper which will advertise Latin events around the state and contain some interesting articles about the Classics.

This paper will be sent to high schools around the state to stimulate interest in the Classics. It has a second purpose in that it will bring the state chapters closer together. Our meetings this past semester have been exceptionally good. We had two members of the English department of Marquette give talks. One talk was on neo-classicism and the other was on the effects of the classic myths on the romantic and victorian periods of Eng-

lish literature." The chapter will be host to the State Eta Sigma Phi Convention on April 6 and 7. The chapter is sending five delegates, including Megas Hyparchos Thomas H. Chmielewski, to the National Convention and it is also planning to award Eta Sigma Phi medals.

GAMMA NU

Montclair State College

Gamma Nu Chapter initiated new members last November, according to the report of Joan Corby, Grammateus of the Chapter. Two honorary members were also initiated. Dr. Edwin Fulcomer gave readings from Greek plays after the initiation and refreshments were served. A program of slides of Roman ruins in France, Spain, and Italy has been part of the chapter's activities this year. The chapter has been selling tins of candy to earn money.

GAMMA OMICRON

Monmouth College

Megas Chrysophylax Sandra Epperson says that Gamma Omicron Chapter is making plans to attend the convention in Bloomington. Five or six members are planning to go at present. The finals of the Illinois State contests will be held at Monmouth this spring and the chapter will assist with this. Following a luncheon Professor Peter Arnott will give a performance of the MENAECHEMI, which he will give at our national convention. *The Classics at Monmouth College* is the title of a beautiful brochure recently published to tell people about the Classics at Monmouth. It is printed in colors and illustrated with pictures of classes in the Department of Classics at the College, a scene from Athens and one from Rome, and quotations from ancients and moderns. It gives a great amount of space to Eta Sigma Phi and pictures two members of the chapter who have held national offices in the Fraternity. Our congratulations to Professor Bernice Fox, Adviser of the Chapter, and the members of the Chapter on this attractive pamphlet.

NEW INITIATES 1960-61

The following is a list of initiates reported to the National Office from October 1, 1960, to October 1, 1961:

(Continued from November, 1961 Issue):

Omega: John Armentrout, Betty Burlison, William Buyn, Robert Chapman, Diane Christian, Stuart Coblin, Henry Corns, Daniel Dopp, William Dyer, Mary George, Donald Hardy, Jr., Sandra Harris, Ernest Horton, Martha Kerlin, Frances Kubitz, Barry H. Mann, Raymer B. Matson, Patricia McLeod, Pamela McSwain, Effie L. Oliver, David Hahn Poist, Margaret A. Rives, Eve Rothrock, Stephen Skjei, Ralph Wheeler.

Alpha Delta: Pamela Bevier, Jame Marie Kelley, Martha Murray McKinnon, Edna Vass, Fontaine Yearley.

Alpha Epsilon: Robert L. Cusman, James H. Bagley David H. Burdash, Gerald A. Hedges, Gilbert J. Milan, Robert M. Sawarynski.

Alpha Omicron: Judy Anderson, Joyce Ahrensfield, Peter Birchall, Wanda Dole, Daniel Taylor.

Alpha Pi: Valerie Atkinson, Lawrence Curtin, Lizzie Gary Davis, Pauline Engel, Frank Fuschino, William Harrall III, David Hodgson, Harold Johnson, William T. Kirchoff, Irvin W. Lindley, David J. Mumford, Carol Owen, Barbara Rees, James Starliper,

Alpha Rho: Robert Karl Bohm. Dale Sultzbaugh, George Touloumes.

Alpha Tau: Bonnie N. Bower, Charles Crocker, Michael Gertner, Lee E. Grugel, Cindiella Marshall, Mollie McDonald, Carolyn Meier, Sharon Stauffer, Bill Vest, Steven Weislogel, Jonathan Ziskind; Associate: Linda Piper.

Alpha Upsilon: David L. Bock, Richard L. Clippinger, Thomas G. Reitz, Marcia Thomason; *Honoris causa:* Giulianna Mariani.

Alpha Phi: Ivan Blackwell Burnett, Jr., Theodore G. Calloway, Jr., Evelyn Grant Carter, Judith Conley Curry, Peter E. Dorsett, Julia M. Garland, James A. Henderson, Marilyn Dea Herring, Diane M. Kenney, Susanna Mize, Billye D. Pyron, Henry James Rhodes III, Alice Grey Wiggers.

Alpha Chi: Patrick J. Araguel, Claude J. Aucoin, Betty G. Bell, Stanley L. Blend, Judith Anne Brandau, Delery Anne Eagan, Frank L. Faust III, Emily J. Feinstein, Kenneth K. Gollledge, Joseph B. Napoli, Gwendo-

lyn M. Nelson, Laura A. Frederick, Natalie M. Prise, Jeanette K. Ringold, Joseph L. Roberts III, William M. Ross, Lloyd B. Sampson, Maurice E. St. Martin, Jr., Raymond J. Termini, Richard P. Tenada, Louis A. Wilson; Associate: Rayford W. Shaw.

Alpha Psi: Charles W. Dunn, Jr., James A. Grove III, Richard M. Hadsell.

Alpha Omega: Byron E. Beard, Valerie Braud, Virginia Ann Campbell, DeWitt T. Collier, Mary Anne Dominick, Edith M. Hammatt, Brendan M. Miles, Marjorie A. Johnson, Edward A. Kaplan, Kurk I. Klossner, John E. LaCarna, Nita G. Pettigrew, Patricia A. Rawlinson, William J. Segreto; Associate: Wayne E. Frederick.

Beta Alpha: Clarice Connors, Richard Cutler, Michael Monnich, Charles Johnson, Richard Nettum, Donald Kounas, Jack Rhodes, Robert Vossler.

Beta Delta: Alex Chronis, William Hoskins, Carole McCormick, James Schaeffer, Margaret Yancey.

Beta Zeta: William T. Bokerman, Joann M. Brady, Russell Bley, Leonard J. Cook, Edward J. Costigan, John F. Eros, Dennis E. Fleming, Austin M. Gomez, David L. Greenier, Joseph M. Huck, Matthew A. Hutmacher, Terry Jo Kaufman, Thomas E. Kraeger, William A. Krumrey, William E. Klostermann, Robert B. Lovelace, Jr., James E. Lyons, Kathleen M. Markway, Enrique Milan, Frances H. Mess, Jon S. Moran, Donald P. Nolte, John C. Norris, Jr., John L. Oldani, Richard L. Segasture, Kenneth E. Sadlo, James J. Scally, David G. Schmidt, Mark D. Schrimpf, Catherine C. Sudkamp, David J. Wynne, Gerald R. Walsh, John J. Winkler.

Beta Theta: Robert C. Arehart, Benjamin M. Butler, William T. Butler, Jr., Raymond L. Claterbaugh, Jr., Jack E. Custer, Louis M. Fisher, Jr., Garland W. Flournoy, Jeffrey L. Gardy, Robert C. Gillespie, Jr., Russell G. MacAllister, Jr., Donald R. Mower, Jr., Kenneth N. Scott, Jennings S. Simms.

Beta Iota: Edward G. Bailey, Carole J. Clodfelter, Jacqueline L. Guffey, William A. Hoover, Clarence F. Ikerd, Mary S. Moricle, Bland B. Pruitt, William L. Stafford, Jr., Tamra E. Stout, Kenna Lee West, Jerry W. Whitley, Margaret G. Wilson; *Honoris causa:* Suzanne B. Britt, Anne A. Tillett.

Beta Kappa: Sarel P. Fuchs, Sheila Wickowski, Mary T. Willett.

Beta Lambda: Sheila Avery.

Beta Mu: Suzanne E. Barnharts, Laddonna Boukes, William O. Breedlove II, Richard Ray Campton, Jerry D. Dennis, Thomas E. Rugh, Donald L. Turner.

Beta Xi: Mrs. Harriet Ekholm.

Beta Omicron: Judith Ann Briggs, Rosemary Bonk, Kathleen Federman, Marguerite Hammen, Mary Jack Hiemenz, Katherine Kasseckert, Judith L. Kortsehl, Rosemary Link, Joan Steinman.

Beta Rho: Rex Adams, Zeb Barnhardt, Sarah Boll, Roy Bostock, Caroline Carpenter, Fred Chappel, Gerald Fink, Sarah Fredrick, Douglas Gates, Kathleen Kittelle, Grace Lovelace, Dorothy McQuown, John Whisnant.

Beta Sigma: William T. Pavelchik.

Beta Tau: James Bachmann, David Bickers, William Carney, Jacques Finley, Robert Keating, Lawrence Kenny, Clement Knapp, George Lynch, David Marantette, Charles Martin, James Mietus, Daniel O'Leary, Bruce Pfeffer, Daniel Salcito, Dale Silva, John Sours, Francis Williams.

Beta Upsilon: Margaret Hanna, Linda Ohlinger.

Beta Psi: Janice Edla Baker, Lynn Drew Bartlett, Susan Boone, Betsy Breytspraak, Betty Gayle Buchanan, Sheila Cruse, William Raney Ellis, III, Wayne Goldsworthy, Judy Growdon, Judith Hollingsworth, W. Harvey Jenkins, Jr., Margaret Martin, Sarah Elizabeth Pickens, John Stephen Richardson, Alex Barbara Robinson, Diane G. Sachs, Frankie Evelyn Salley, Donna Slaton, Susan Vardell Smyth, Bette Carol Thomas, Dorlyse Whaley.

Beta Omega: Sheila Armington, Janet Bronnenberg, Marilyn Carroll, Janet Lee Finch, Judith Gray, Jeffrey Havens, Ronald Hoagland, William G. Hostetler, Martha R. Kespohl, Carolyn Mathews, Janice Meeker, Garth I. Pitman, Patricia Smith, Eleanor R. Stieglitz, Linda Tavalacci, Judy Vance, Richard D. Wiegman, Claretta Willmann, Diane Wolfe, Tod Wright.

Gamma Alpha: Mary Louise Gabbard, Casimer Pikuza, Charlene Weaver, Ray E. Weaver.

Gamma Beta: Barbara Drumm, Judy Fiebiger.

Gamma Gamma: Judith Pfister, Adelgunde Wessel.

Gamma Epsilon: Elizabeth M. Taylor, Camille B. Kornman, Davida M. Tenenbaum. Associates: Elizabeth A. Brinkman, Richard V. Desrosiers, Leonard R. Mendelsohn, John W. Perin, John Christ Rouman.

Gamma Zeta: Mary Jane McDonald, Mary Elizabeth Shiere, Eleanor Marie Stricker.

Gamma Eta: James E. Abbott, Richard Alford, Kerry O. Burns, Lamar E. Cooper, Veda Grace Davis, Charles R. Embry, Wylie L. Heath, Alice E. Hunter, William E. Laird, Merelin Ray McCon, James W. Mallard, Jo Anne Marrs, Weston Robert Reese, Charles B. Roper, Ronald C. Wimberley; *Honoris causa:* Dr. G. Earl Guinn.

Gamma Theta: Sibley Burnett, Nancy Chambers, Dave Dowell, Don DeBord, Carla Greisser, Mrs. Thelma Parish, Marlene Rohner.

Gamma Iota: Paul Thomas Alesi, Richard Earl Calvin, Phillip Kent Evans, Peter James Hedges, Steven Michael Kain, Martin Peter Kochman, Jesse Henry Parmer, III, Bruce Alan Polizotto, Richard Napoleon Winston.

Gamma Kappa: Ronald D. Boldman, Martha L. Hertzner, Marvin G. Jacobs, Nicholas Kovalevsky, John T. Miller, Frederick E. Noll, Armand L. Weller.

Gamma Lambda: Robert Abicht, Richard Aschenbrenner, Richard Cran-
gle, Randall Frazer, Wayne Kresbach, John McGee, Gerald McLoone, Robert Theobald, William Wera.

Gamma Mu: Keith E. Boyer, Lois M. Studt.

Gamma Nu: Joan Corby, Angela Garubo, Alice Jaffe, Richard Koehler, Frances McFadden, Adeline Maffei, Penelope Mount, Edwina Revack, Raymond Salvagno, Arthur Van Slooten.

Gamma XI: Winston C. Murray, Moses Dikedi Elias Nwulia, Agnita Constanca Rawlins, Lizette I. West-
ney.

Gamma Omicron: Carol Clark, Carole Dettman, Sandra Epperson, Grace Hall, Gary Huffman, Pat McMahon, Betty Moore, Donna Peterson, Joan Doris Rothus.

Gamma Rho: Gordon Rein Dragt, Stanley W. Hagemeyer, Dave John Kleis, Johannes Schokker, Mary Ten-
pas, Jane Alison Woodby.

Gamma Sigma: Nancy Chapman, Paul Clayton, Marilyn Heiman, Susan Ford, Johanna Hoff, Martha Maisel, Katherine Wells.

Gamma Tau: Blanche Bing, Ruby Grant, James Hood, Sandra McClung, Finton Moorhead, Jennifer Reynolds, Rodney Taylor, Gloria Winstead.

Gamma Upsilon: James E. Blanken-
ship, Geraldine Armon Goleman, John Ronald Evans, James Edward Foster, William Emory Glover, Elmer Leo Grisso, Polly Ann Johnson, Donald R. Liljestrang, John Wilson McKim, Robert Clifford Williams, Geraldine Frances Wilson.

Gamma Phi: Larry E. Edenhofer, Ruth Ann Calabrese, Mary Clow, Paul Joseph Dierdorf, Jerome Meckier, Christine L. Nann, Edward P. Pirrera, Mary Anne Riester, Emil Rossi.

Gamma Chi: Betty Byasse.

Gamma Psi: Barbara Fincher. *Honoris causa:* Sister Mary Bernard.

Gamma Omega: Pat Cloud, Nancy Gerick, Diane Wolf, Nancy Stiteler.

Delta Alpha: Anne Weaver Ax, Gatewood Anthony Folger, Ann Booth Jarvis, Fan Rhea Lucy, Jean Venable Martin, Virginia Akers Neblett, Barbara Alice Rae, Patricia Graves Thompson.

Delta Beta: Edward W. Bailer, Richard O. Collin, Daniel Dee, James T. Dunningan, Kenneth G. Fleissner, John Foran, Timothy F. Harrington, Jr., Ronald J. Machcinski, John Menchini, J. Terrence Mitchell, James Myers, George J. Nathan, Robert M. O'Neill, Paul E. Szarmach, Anthony Szczesniak, Edward H. Skerrett, Rudolph Torrico, Philip S. Volastro; *Honoris causa:* Very Reverend James J. McGinley, S. J., Reverend William A. Scott, S. J., Reverend John J. Canavan, S. J., Reverend Robert J. Nelson, Reverend Raymond G. Bosch.

*The Most
Distinguished Mark
in
Fraternity Jewelry*



IN CANADA

L. G. BALFOUR COMPANY, LTD.

MONTREAL AND TORONTO

Wear Your Pin with Pride

IT IS A MARK OF DISTINCTION AND
REFLECTS THE RICH TRADITIONS
OF YOUR FRATERNITY LIFE.

OFFICIAL JEWELER TO
ETA SIGMA PHI

L. G. Balfour Company
ATTLEBORO MASSACHUSETTS

WRITE FOR COMPLETE INSIGNIA PRICE LIST